

An aerial rendering of a modern building complex. The main building is a two-story structure with a brown roof and grey walls, featuring a large deck with a wooden railing. It is situated on a body of water, with a dock and stairs leading to it. To the right, there are several tall, green trees and a paved area. The background shows a large body of water with a bridge structure in the distance.

**ReidMiddleton**

Civil & Structural Engineering  
Surveying, & Planning

**Building Information Modeling**



*Charleston Gate, Naval Base Kitsap, Bremerton, WA*

# Our BIM Background

Reid Middleton offers experience in the use of Building Information Modeling (BIM) on a variety of projects to increase the productivity in building design and construction and to strengthen communication, collaboration and coordination between team members. We use Autodesk's Revit® software program, as it's compatible with other modeling and design software.

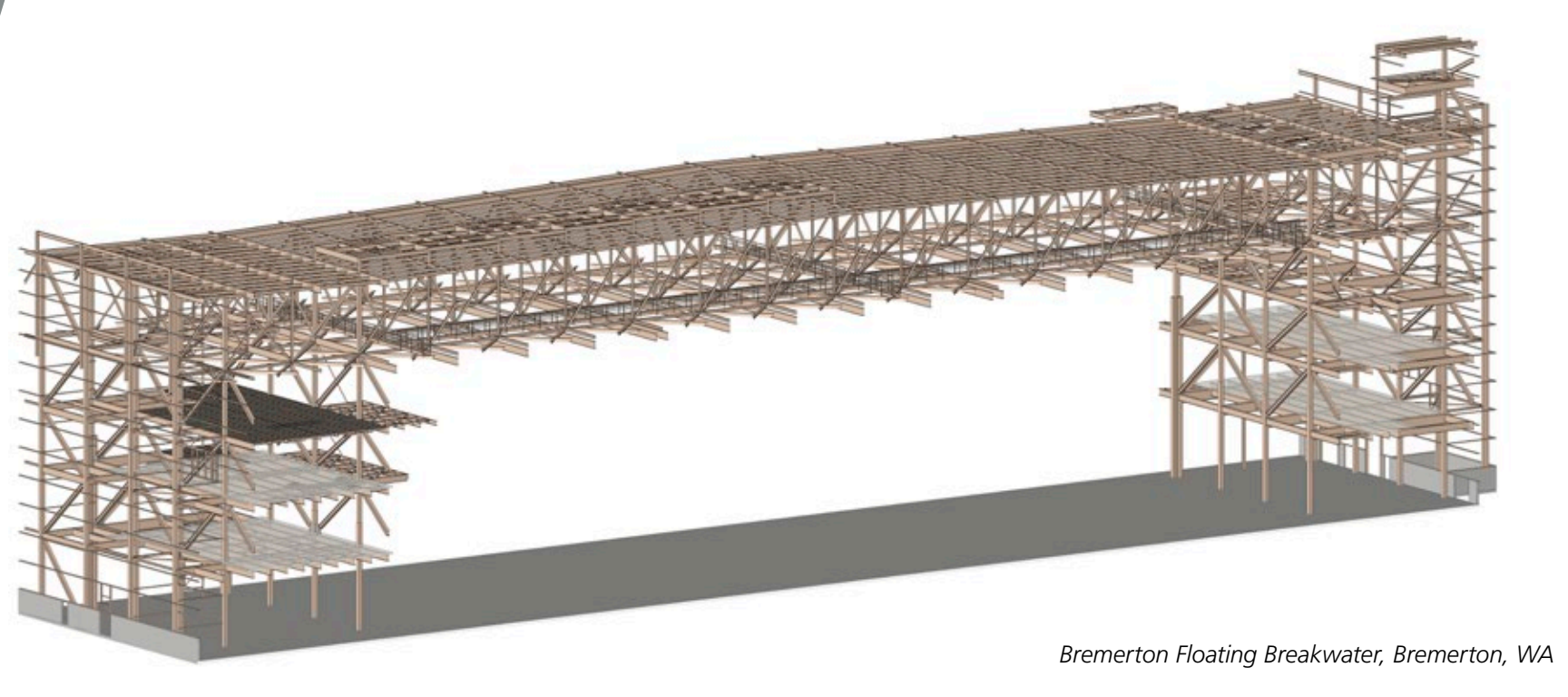
Since 2005, we have used Revit®, for projects totaling more than 2 million square feet. As a shared knowledge resource, we have created BIM models for numerous architects, clients, and subconsultants to improve project understanding and garner additional ideas regarding a project's design and construction, all in order to provide our clients with the best design possible while using resources efficiently.



*Gig Harbor Fire Department Training Tower, Gig Harbor, WA*



*U.S. Coast Guard Dual Covered Moorage Replacement, Coos Bay, OR*



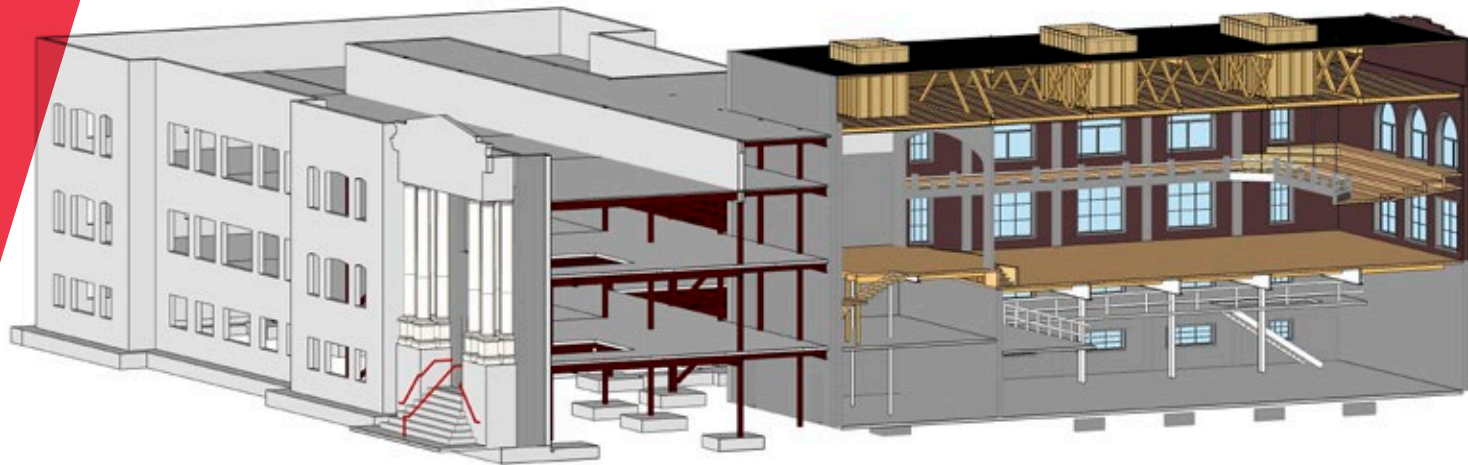
*Bremerton Floating Breakwater, Bremerton, WA*

# What Our Clients Say

## Performance regarding Whatcom Middle School Replacement

"The reconstruction of our fire-damaged Whatcom Middle School was a complex undertaking. Reid Middleton's innovative application of Building Information Modeling (BIM) technology to illustrate the complexities of our damaged 100-year-old school building and the innovative staged reconstruction approach helped the district effectively communicate why this approach was best. At the end of the day, their use of BIM technology was a key factor in completing the project one year ahead of schedule allowing our students and staff to get back into their school building earlier than expected."

*Ron Cowan, Assistant Superintendent*



*Whatcom Middle School Replacement, Bellingham, WA*



*Birchwood Elementary School Replacement, Bellingham, WA*



*Kahawaiokapi'a Bridge Replacement Conceptual Rendering, Hana, HI*



# What We Do

## Aviation

- Hangars
- Terminals
- Support/Maintenance Facilities

## Academic

- K-12
- Higher Education

## Civic/Public

- Civic Centers
- Libraries
- Sports & Recreation
- Justice
- Fire Stations
- Senior & Youth Centers

## Commercial

- Office & Retail
- Banking
- Hospitality
- Mixed-use

## Healthcare

- Hospitals
- Clinics
- Laboratories

## Renovation

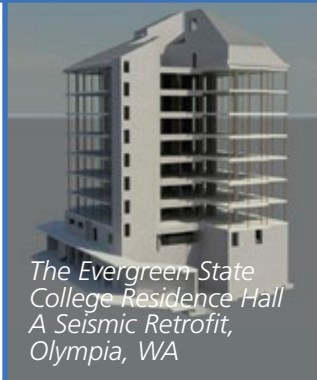
- Seismic Risk Assessment
- Seismic Retrofit
- Historic Preservation

## Special Projects

- Parking Structures
- Bridge/Transportation
- Industrial
- Military
- Code Consulting

## Waterfront

- Marine Structures
- Over-water Facilities
- Upland Structures



*Alaska Native Tribal Health Consortium  
Parking Garage, Anchorage, AK*

*Olympia Fire Department Residential  
Training Tower, Olympia, WA*

*New Harrison Medical Center  
Orthopaedic Hospital, Silverdale, WA*

*Naval Hospital Twentynine Palms Seismic  
Upgrades, Twentynine Palms, CA*

*University of Alaska Parking Garage, Anchorage, AK*

*The Evergreen State  
College Residence Hall  
A Seismic Retrofit,  
Olympia, WA*

**ReidMiddleton**

# Contact

**EVERETT, WASHINGTON**

425.741.3800

**SAN DIEGO, CALIFORNIA**

858.668.0707

**ANCHORAGE, ALASKA**

907.562.3439

[reidmiddleton.com](http://reidmiddleton.com)